

WAYNE ART CENTER

2 international ceramic exhibitions open April 1

WAYNE » The Wayne Art Center, 413 Maplewood Avenue in Wayne, will host two international ceramic exhibitions for public viewing from April 1 through April 29, 2017. They are Ceramic Innovations, an inter-

national juried exhibition of contemporary ceramics juried by Chris Gustin and Essential Earth, an invitational ceramic exhibitions presented by Wayne Art Center. The opening of these shows will be cele-

brated on April 1 with a Gallery Talk by Jim Lawton, co-juror of awards, and Meet the Artists' Talk from 3 to 5 p.m., followed by an opening reception and awards presentation by Lawton at 5 p.m. These events are

free, and offers the public a chance to meet the artists and enjoy refreshments.

Ceramic Innovations will be featured in the Daventport Gallery and Essential Earth in the Ethel Sergeant Clark Smith Gallery. The Wayne Art Center galleries are open from 9 a.m. to 9 p.m. Monday through Friday and Saturdays, 9 a.m. to 4 p.m.

Gustin, founding member of the Watershed Center for the Ceramic Arts, Newcastle, Maine and owner, Gustin Ceramics Tile Production, juried the Ceramic Innovations entries and is the co-juror of Awards. Gustin will be conducting a workshop, lecture and demo on Sunday, April 2 and Monday, April 3, 10 a.m. through 4 p.m. Register at www.wayneart.org.

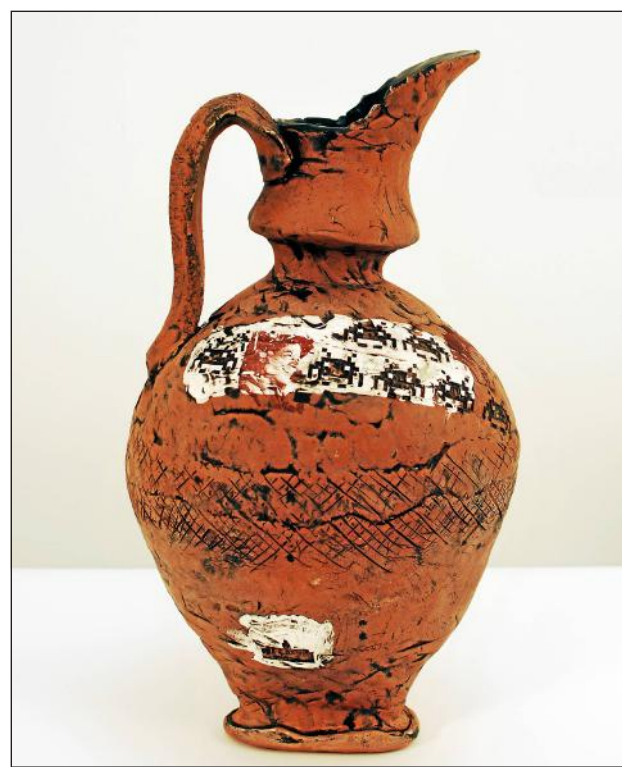
Lawton, Ceramic Innovations co-juror and presenter of awards, is professor of Ceramics and Graduate Program Director at the College of Visual and Performing Arts at UMass Dartmouth.

The Essential Earth curatorial team includes Nancy Campbell, executive director; Karen Louise Fay, director of Exhibitions & Events; and Brett Thomas, Wayne Art Center Ceramic faculty and curator of Artist Selection.

The Wayne Art Center offers state-of-the-art, handicap-accessible facilities, free private parking, and is within walking distance of public transportation and the Radnor Trail. For further information, call 610-688-3553 or visit www.wayneart.org.



Chris Gustin's Vessel with Dimple.



Andrew Snyder's Ride Oinochoe.



Marc Leuthold's Yingge.

PA PROSTATE CANCER COALITION

Bottoms Up fundraiser April 1 at Desmond Hotel

The Pennsylvania Prostate Cancer Coalition will host its 3rd Annual Bottoms Up for Prostate Cancer at The Desmond Hotel Saturday, April 1, from 6 to

10 p.m. at The Desmond Hotel, 1 Liberty Blvd, Malvern.

The evening of casual is a benefit for the PA Prostate Cancer Coalition.

Breweries on hand will be

Victory, Conshohocken. Sly Fox, Roy Pitz. Zero Day, Dog Fish Head, 2SP Brewery, Levante and others.

There will be wine and spirits, as well as food sta-

tions featuring an oyster bar, dips, tapas and appetizers, sliders and small bites, pasta, desserts and more.

Win gig with small games of chance, prize wheel, 50/50,

\$500 tear off tickets, silent and live auction and more!

Tickets are \$60 or \$100 per couple and \$209 for overnight package inclusive of tax and gratuity.

For information, visit <https://squareup.com/market/pa-prostate-cancer-coalition/item/bottoms-up-for-prostate-cancer-awareness>.

JAPAN AMERICA SOCIETY OF GREATER PHILADELPHIA &

Margaret Kuo's

Present

a Kaiseki Dinner and Ikebana Flower Arrangement Demonstration

Please join Margaret Kuo and enjoy this exquisite food experience, which is as culturally evocative as it is palate pleasing.

Kaiseki, the haute cuisine of Japan, is a multi-course meal revered for its use of seasonal ingredients, sparse portion and intricate presentation. Always seeking the harmony between food and nature, this ancient culinary ritual was recently recognized by UNESCO as a World Heritage Cuisine.

Mrs. Kazumi Tune, senior advisor of the JASGP, and assisted by Mrs. Fumiyo Batta will be the expounders of the food served.

Ms. Meei Huey Lin, founder and teacher of the Sogetsu Ikebana School will present an Ikebana demonstration.

175 E. Lancaster Ave., Wayne, PA 19087



\$65/person plus tax & gratuity

**Margaret Kuo's Wayne
Akari Room**

Friday, April 7, 2017
7:00 pm

A project of the Japan America Society of Greater Philadelphia celebrating Subaru Cherry Blossom Festival of Greater Philadelphia

For reservations:
610-688-7200

www.margaretkuo.com